

# Area Percent Report

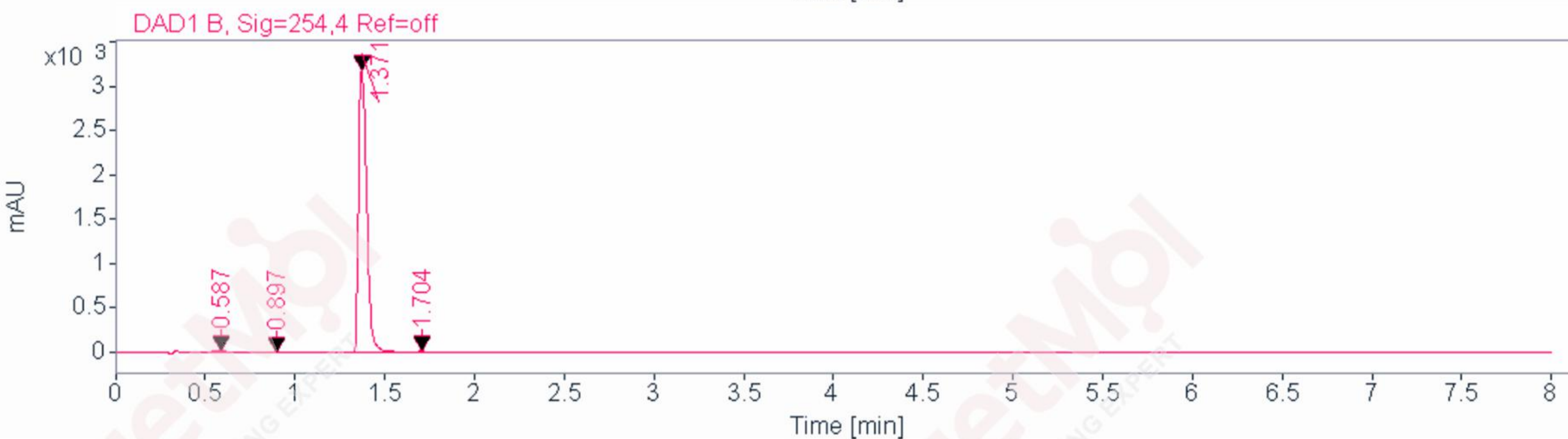
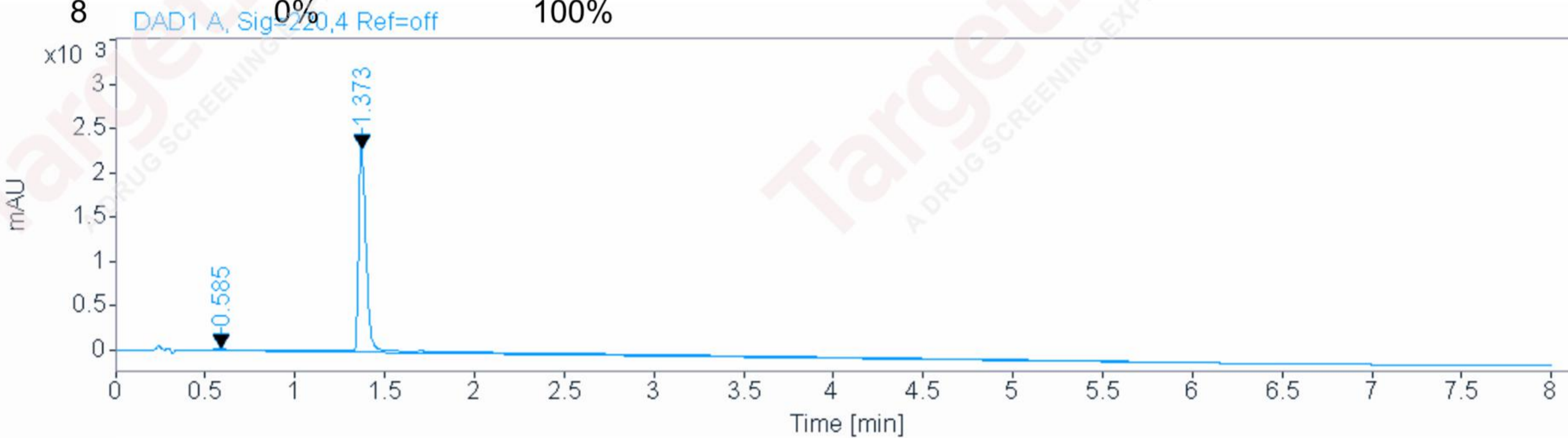


Agilent Technologies

**Data file:** E:\HPLC\data\TEST\0CJK 10-19 17-11-36\018-P2-B7-14517120-01-03.D  
**Sample name:** 145171  
**Instrument:** 2DLC **Sample type:** Sample  
**Acq. method:** F0.6 220nm 254nm.M **Location:** P2-B7  
**Analysis method:** F0.6 220nm **Injection:** 1 of 1  
**254nm.M** **Injection volume:** 1.000

FLOW RATE : 0.6ml/min  
 COLUMN : ACE C18 50\*2.1 2um  
 COLUMN TEMPERATURE : 30  
 GRADIENT PROGRAMME :  
 TIME(MIN) MOBILE PHASE-A(H2O+0.1TFA) MOBILE PHASE-B(CH3CN+0.1TFA)

0 90% 10%  
 6 0% 100%  
 8 0% 100%



**Signal:** DAD1 A, Sig=220,4 Ref=off

RT [min]	Type	Width [min]	Area	Height	Area%	Name
0.585	BV E	0.1783	199.4959	15.0814	1.7698	
1.373	VB R	0.0680	11072.6318	2307.8772	98.2302	
Sum			11272.1277			

**Signal:** DAD1 B, Sig=254,4 Ref=off

RT [min]	Type	Width [min]	Area	Height	Area%	Name
0.587	BB	0.0677	80.5882	16.0138	0.7898	
0.897	BB	0.0366	9.9339	4.2044	0.0974	
1.371	BV R	0.0508	10088.2959	3194.6079	98.8656	
1.704	VB E	0.0299	25.2285	12.8294	0.2472	
Sum			10204.0464			