

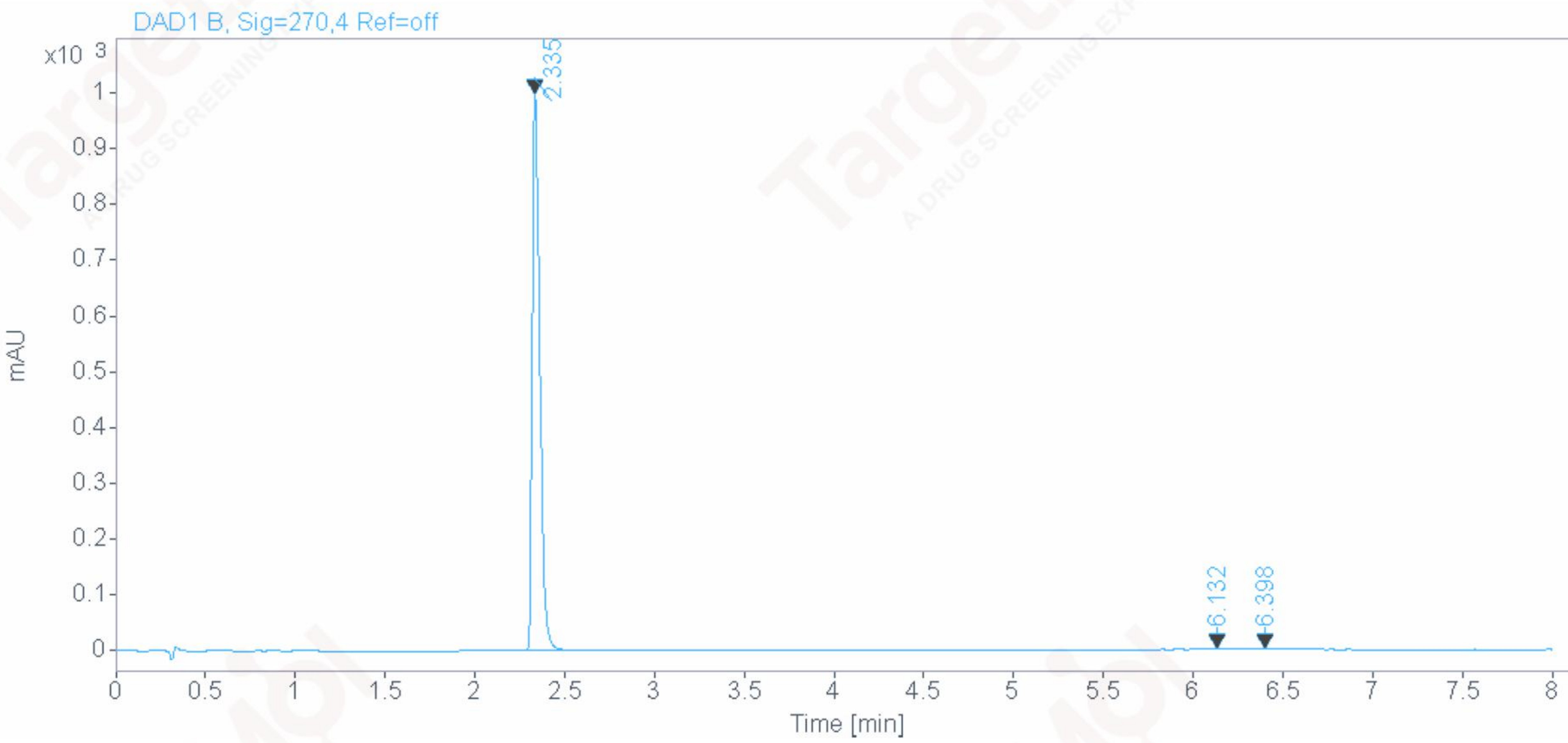
Area Percent Report



Agilent Technologies

Data file: E:\HPLC\data\TEST\0CJK-1 0212-01-07 11-39-14\003-P2-E6-14636911-58-18.D
Sample name: 146369
Instrument: 2DLC
Sample type: Sample
Location: P2-E6
Acq. method: F0.6 320 270.M
Injection: 1 of 1
Analysis method: F0.6 320 270.M
Injection volume: 1.000

FLOW RATE : 0.6ml/min
COLUMN : ACE C18 50*2.1 2um
COLUMN TEMPERATURE : 30
GRADIENT PROGRAMME :
TIME(MIN) MOBILE PHASE-A(H2O+0.1TFA) MOBILE PHASE-B(CH3CN+0.1TFA)
0 90% 10%
6 0% 100%
8 0% 100%



Signal: DAD1 B, Sig=270,4 Ref=off

RT [min]	Type	Width [min]	Area	Height	Area%	Name
2.335	BB	0.0455	2951.7454	997.1080	99.5938	
6.132	MM	0.0881	5.5653	1.0528	0.1878	
6.398	MM	0.1320	6.4727	0.8173	0.2184	
	Sum		2963.7834			