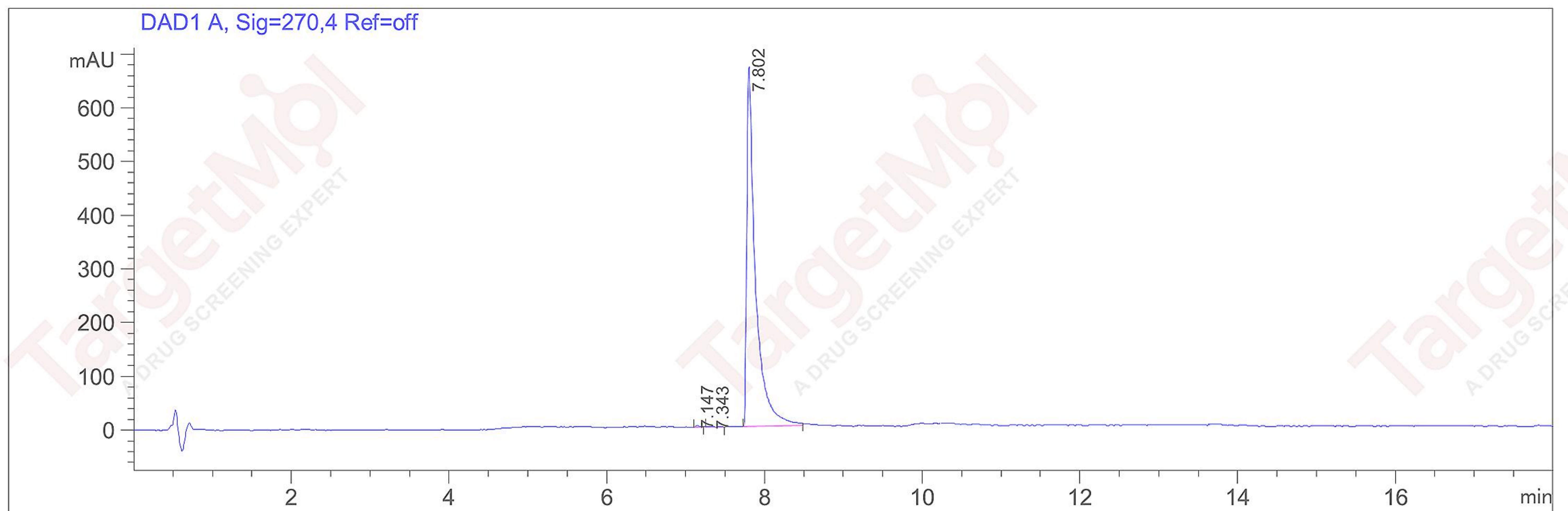


Sample Name : 119834
 Acq. Operator : 0
 Spec. Reported : Integration
 Method Info :
 Column: Agilent C18, 100mm*4.6mm, 3.0um
 Temperature: 40. Flow rate: 1.5mL/min
 Mobile phase: Water: ACN 70: 30

Tgt Mass (EZX) :
 Location : P1-A-09
 Inj : 0
 Inj Volume : 5 ul



Integration Results for DAD1 A, Sig=270,4 Ref=off

RetTim	Width	Area	Height	Area%
7.15	0.05	11.46	3.23	0.22
7.34	0.10	8.75	1.09	0.17
7.80	0.11	5188.17	670.11	99.61